

Customer :

customer

Customer part :

customer part

Comment :

Comment

S1=2.69

S2=3.33

Tmax=455

Tp S2=494.0

PI=0.45

HI=90

Sample =1683.10

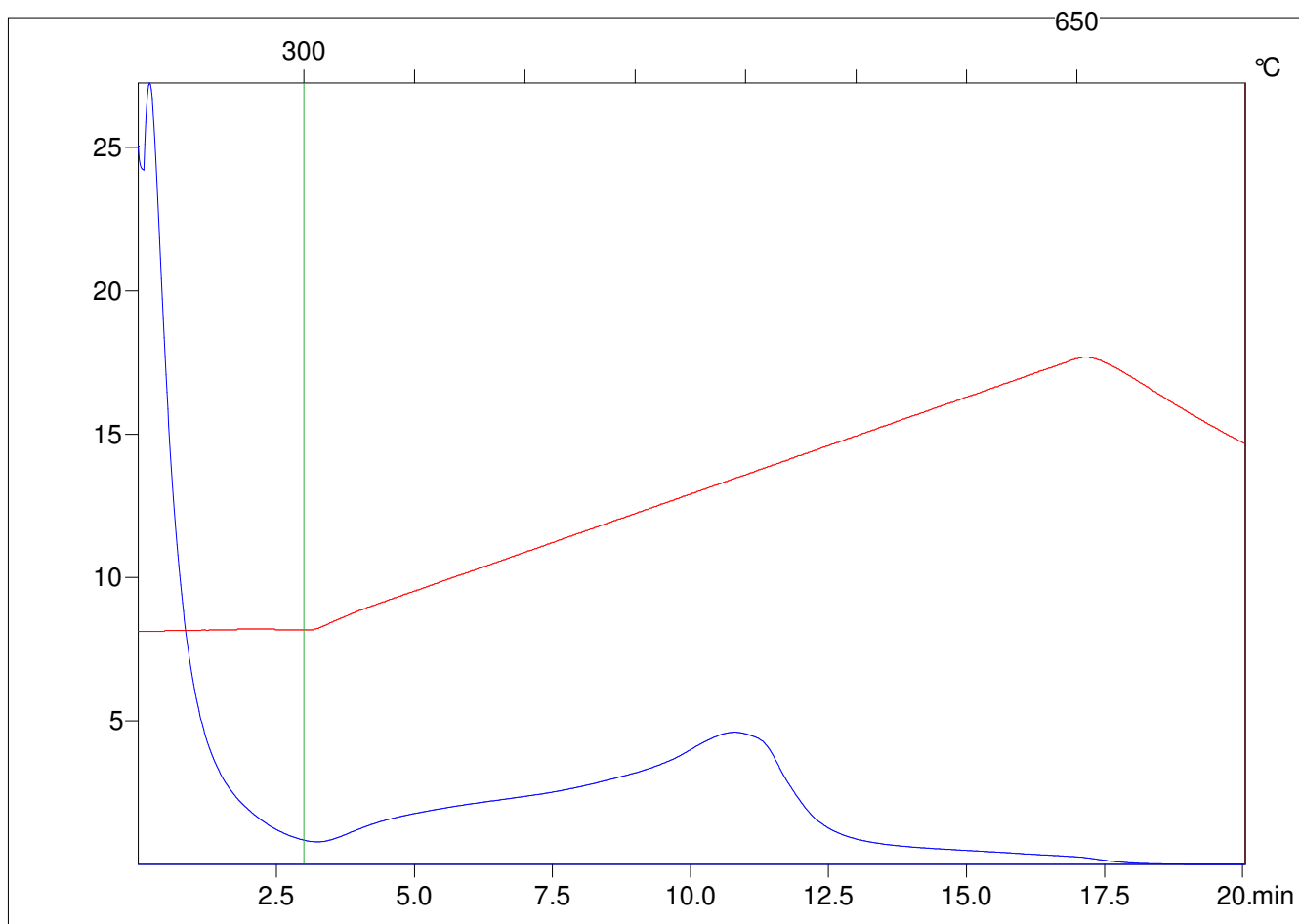
Method =Bulk Rock

Cycle=Basic

KFID(10*9)=1444

Qty =70.7

TOC=3.69



C:\VINC\PK1_1792\PK041.R00 : FID pyrolysis graphic

State

Pyro Status

Oxi Status